

## OTHER WASTE REMOVAL PROGRAMS

**YARD WASTE:** Picked up on regular trash day. Disposal of grass, leaves, and trimming up to 1" thick must be placed in paper bags or barrels labeled as "Yard Waste". Yard Waste Stickers can be picked up at Town Hall Customer Service. Week of *April 25, June 6, July 25, September 12, October 17, November 14, December 5*

**COMPOSTING:** Free Black Earth drop-off locations for composting organic waste are located at the dog park and next to the Police Station. Visit the website to register to receive a code for the bins and learn about composting on the Town website. Visit [blackearthcompost.com](http://blackearthcompost.com) for info about residential pick-up.

**METAL ITEM DROP-OFF:** Last Saturday of the month excluding Feb. and Mar. from 8am-12pm (weather permitting), DPW Yard, 200 Paradise Rd. Visit Town website for a list of acceptable items.

**STYROFOAM DROP-OFF:** Year-round on the last Saturday of the month (weather permitting) from 8am-12pm, DPW Yard, 200 Paradise Rd. Package styrofoam in trash bags if possible.

**HAZARDOUS WASTE PICK-UP** Occurs quarterly. Visit the Town website or call 781-596-8850 for dates and fees.

**MERCURY RECOVERY PROGRAM:** Bring household fluorescent bulbs (CFL & SHOP up to 4-feet long), rechargeable batteries (lighter than 2 lbs.), mercury switches, thermostats/thermometers to Health Dept. collection area on the third floor at Town Hall. No alkaline batteries accepted.

**PRESCRIPTION DRUGS:** Drop off in box in front lobby of Swampscott Police Station.

## OTHER WASTE REMOVAL PROGRAMS (Continued)

**MATTRESS RECYCLING:** Residents must dispose of mattresses through the new Mattress Recycling Program. Purchase a sticker for \$20 at Town Hall or online and schedule a pick-up on the 2nd or final Saturday of the month. Mattresses must be left out by the curb on your property no more than 24 hours in advance of pick-up. A box spring and mattress set can be disposed of using one sticker.

## REUSE!

### SIMPLE RECYCLING:

Discard unwanted clothing, accessories, linens, textiles, or small household items by scheduling a free pick-up right at your front door with Simple Recycling. [simplerecycling.com](http://simplerecycling.com)

### UNSURE IF SOMETHING CAN BE RECYCLED?

Recycle Smart offers a great online tool - just type in a product and Recycle Smart will tell you if it can be recycled. It will even give you the option to look up alternative drop-off locations if the item can't be put in your normal recycling bin.

[recyclesmartma.org](http://recyclesmartma.org)

Sign up for the Town's Alert System to receive phone calls, texts, and/or emails informing you about changes to the trash and recycling schedule or upcoming yard waste dates. Sign up at [swampscottma.gov](http://swampscottma.gov).



Follow Reduce, Reuse, and Recycle in Swampscott on Facebook to stay up-to-date on important trash dates, recycling tips & tricks, important regional information, and more!

[facebook.com/SWACSwampscott](https://www.facebook.com/SWACSwampscott)

## TOWN OF SWAMPSCOTT

# 2022 TRASH & RECYCLING GUIDE

## TRASH

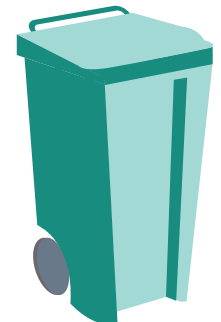
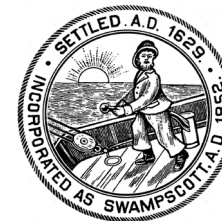
### CARTS

All trash must be placed in the Town-issued 35-gallon cart.

### OVERFLOW BAGS

Excess trash that cannot fit in the 35-gallon cart must be placed in official overflow bags, which can be purchased for \$15/sleeve of 5 bags. Bags can be purchased at Town Hall, Stop & Shop, JRH Services, Richdale Convenience Store, Whole Foods, CVS, or Walgreens.

On pick-up day, overflow bags can be placed in a trash barrel of your choice, on top of your cart, or on the ground next to it. If not contained in a barrel, overflow bags should not be put out until 5am on the morning of trash pick-up. Prior to pick-up day, overflow bags must be contained indoors or in a sealed container until pick-up day to prevent animal foraging and bag damage.



## BULK ITEMS

Items that cannot fit into a Town-issued cart or overflow bag must be disposed of and paid for by the resident by purchasing official bulk item stickers from the following places:

**BULK (NON-METAL): \$20 (1 item per week)**

Examples: couch, table, chairs, large rigid plastics  
Note: Mattresses can only be disposed of through the new Mattress Recycling Program. (See "Other Waste Removal Programs). Purchase bulk stickers at the retailers listed on the front of this brochure, at Town Hall, or online at [swampscottma.gov](http://swampscottma.gov).

**WHITE GOODS: \$30**

Examples: Refrigerator, stove, water heater  
Purchase white goods stickers through the Town's waste contractor JRM by calling 800-323-4285.

For a complete list of non-metal bulk items and white goods eligible for bulk item pick-up, visit [swampscottma.gov](http://swampscottma.gov)

## SCHEDULE

Your trash cart, bulk items, recycle receptacles, and contained overflow bags may be placed curbside for weekly collection between 7 PM the evening before and 7 AM the morning of your scheduled collection. **Missed your pick-up?** Call JRM HAULING at 800-323-4285 or Swampscott Customer Service at 781-596-8850.

## HOLIDAY SCHEDULE

**Pick-up will be delayed by one day on the day of the following holidays and for the remainder of the week.**

January 17	May 30	October 10
February 21	July 4	November 11
April 18	Sept. 5	November 24

# RECYCLE!

All recyclables must be placed in a recycle barrel that is clearly labeled as RECYCLE or has a large recycle symbol on the container. Barrels with lids are preferred over open bins. Customer Service at Swampscott Town Hall can provide a free large RECYCLE sticker to place on a non-conventional container.

## GLASS



Bottles & Jars

## METAL



Food & Beverage Cans

## PLASTIC



Bottles, Jars, Jugs, & Tubs  
(if possible, with caps)

## CARDBOARD & PAPER



Mixed Paper, Newspaper,  
Magazines, Boxes (flattened)



Paper towels & toilet paper



Plastic bags (Return to select retailers)



Food or drink (Rinse containers)



Plastic lined paper cups and cartons



Styrofoam (bring to styrofoam drop-off days)

## THIN-FILM PLASTIC BAG RECYCLING

**DO NOT** place plastic bags (ziploc bags, trash bags, grocery bags, shipping bags, sandwich bags, dry cleaning bags) in recycling. Plastic bags of all kinds can be returned to select retailers. See a list of retailers near you at [how2recycle.info/sdo](http://how2recycle.info/sdo).

**For a list of what can and cannot be recycled, visit [swampscottma.gov](http://swampscottma.gov) or [recyclesmartma.org](http://recyclesmartma.org)**