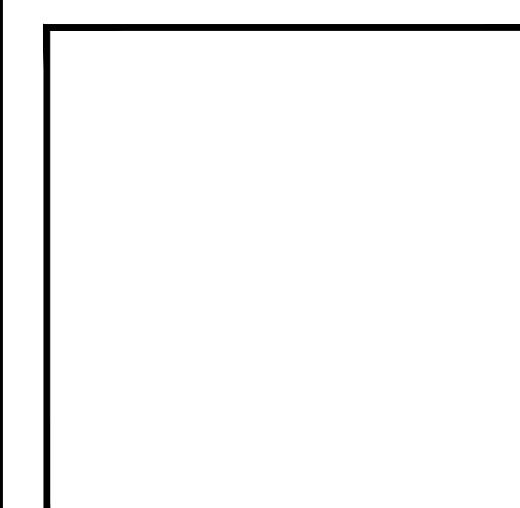


OFFSITE ROADWAY IMPROVEMENTS AT VARIOUS LOCATIONS

IN THE MUNICIPALITY OF **SWAMPSCOTT** ESSEX COUNTY COMMONWEALTH OF MASSACHUSETTS

OFFSITE ROADWAY IMPROVEMENTS AT
VARIOUS LOCATIONS
SWAMPSCOTT, MASSACHUSETTS



REVISIONS		
NO.	REVISION	DATE

DRAWN/DESIGN BY
CGZ

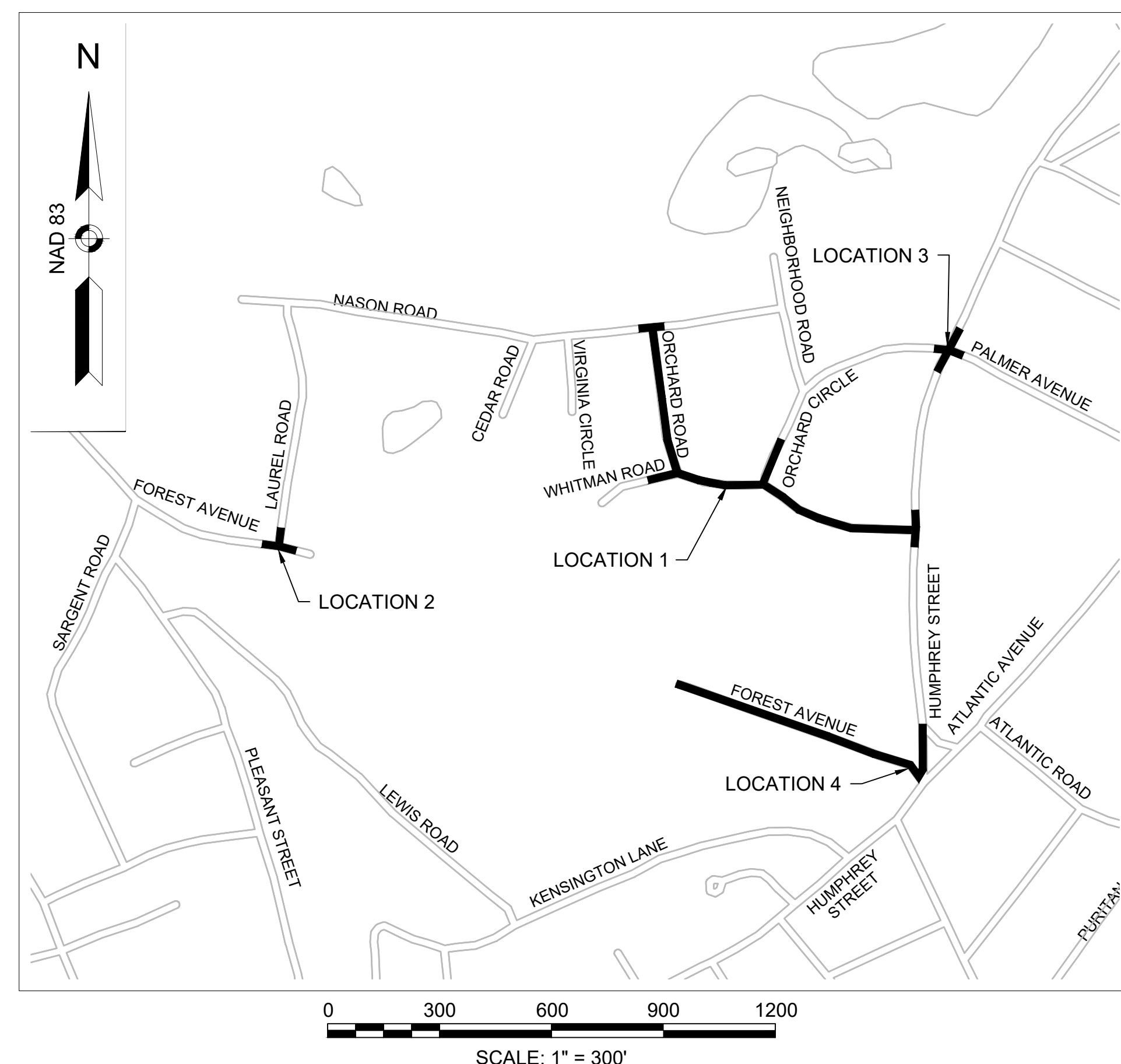
CHECKED BY
ZEW

TITLE SHEET &
INDEX

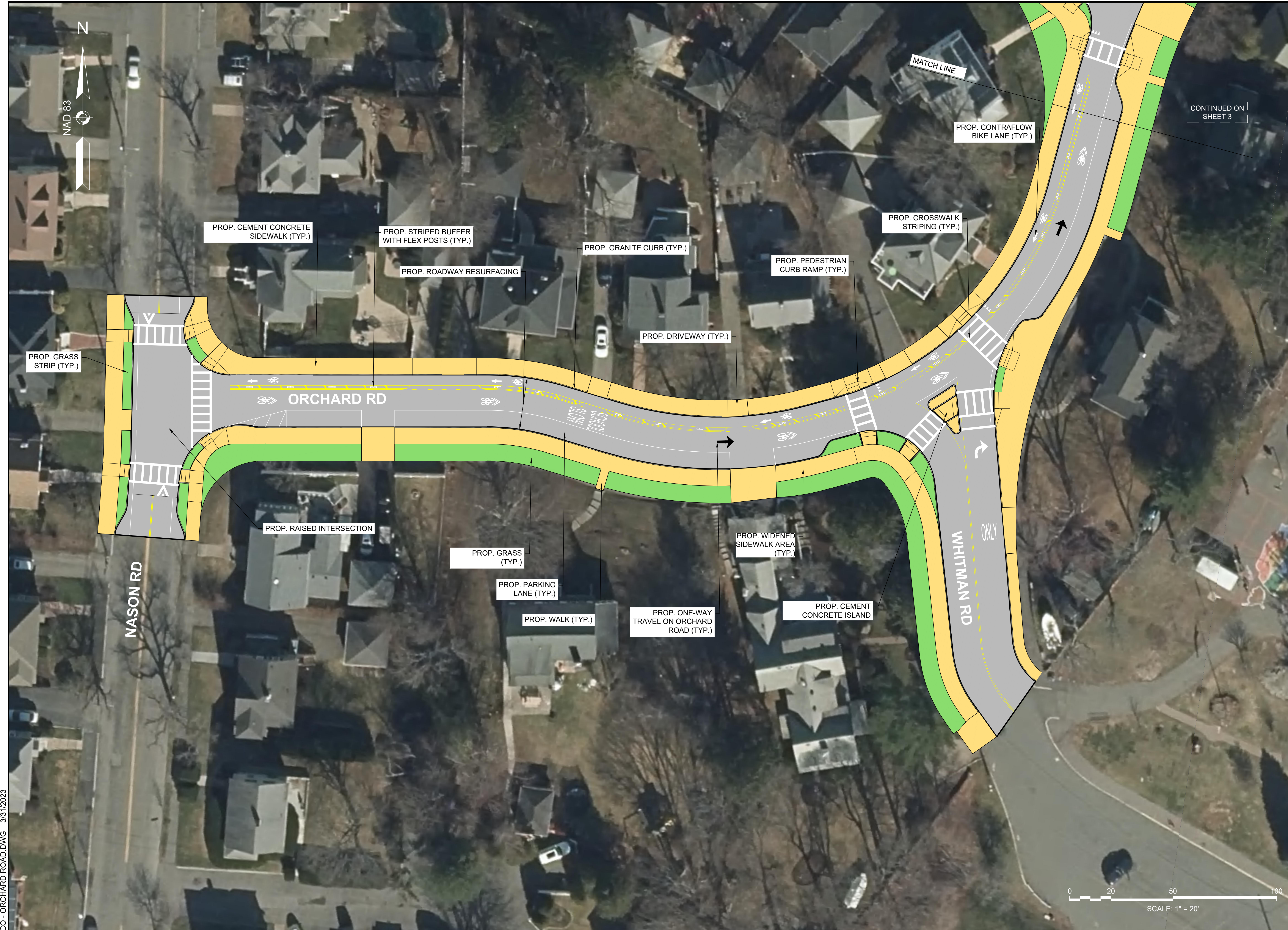
SCALE:
AS NOTED
2021185.04
1 OF 6

INDEX

SHEET NO.	DESCRIPTION
1	TITLE SHEET & INDEX
2 - 3	LOCATION 1 ORCHARD ROAD
4	LOCATION 2 FOREST AVENUE AT LAUREL ROAD
5	LOCATION 3 HUMPHREY STREET AT ORCHARD CIRCLE
6	LOCATION 4 FOREST AVENUE EXT. AT HUMPHREY STREET



CONCEPTUAL DESIGN PLANS



GPI Engineering
Design
Planning
Construction Management
617.812.7295
Greenman-Pedersen, Inc.
179 South Street, Second Floor
Boston, MA 02111

PREPARED FOR
TOWN OF SWAMPSCOTT
22 MONUMENT AVENUE
SWAMPSCOTT, MA 01907

**OFFSITE ROADWAY IMPROVEMENTS AT
VARIOUS LOCATIONS
SWAMPSCOTT, MASSACHUSETTS**

CONTINUED ON SHEET 3

REVISIONS		
NO.	REVISION	DATE

DRAWN/DESIGN BY CGZ	CHECKED BY ZEW
------------------------	-------------------

**LOCATION 1
ORCHARD ROAD**

SCALE: 1"=20'
0 20 50 100
SCALE: 1" = 20'

2 OF 6

**OFFSITE ROADWAY IMPROVEMENTS AT
 VARIOUS LOCATIONS
 SWAMPSCOTT, MASSACHUSETTS**



--

REVISIONS

NO.	REVISION	DATE

DRAWN/DESIGN BY: CGZ
 CHECKED BY: ZEW

**LOCATION 1
 ORCHARD ROAD**

SCALE: 1"=20'

2021185.04

CO - ORCHARD ROAD.DWG 3/31/2023



**OFFSITE ROADWAY IMPROVEMENTS AT
VARIOUS LOCATIONS
SWAMPSCOTT, MASSACHUSETTS**

REVISIONS		
NO.	REVISION	DATE

**LOCATION 2
FOREST AVENUE AT
LAUREL ROAD**

PREPARED FOR
 TOWN OF SWAMPSCOTT
 22 MONUMENT AVENUE
 SWAMPSCOTT, MA 01907

**OFFSITE ROADWAY IMPROVEMENTS AT
 VARIOUS LOCATIONS
 SWAMPSCOTT, MASSACHUSETTS**

--	--

REVISIONS		

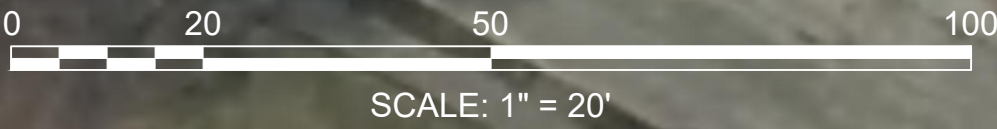
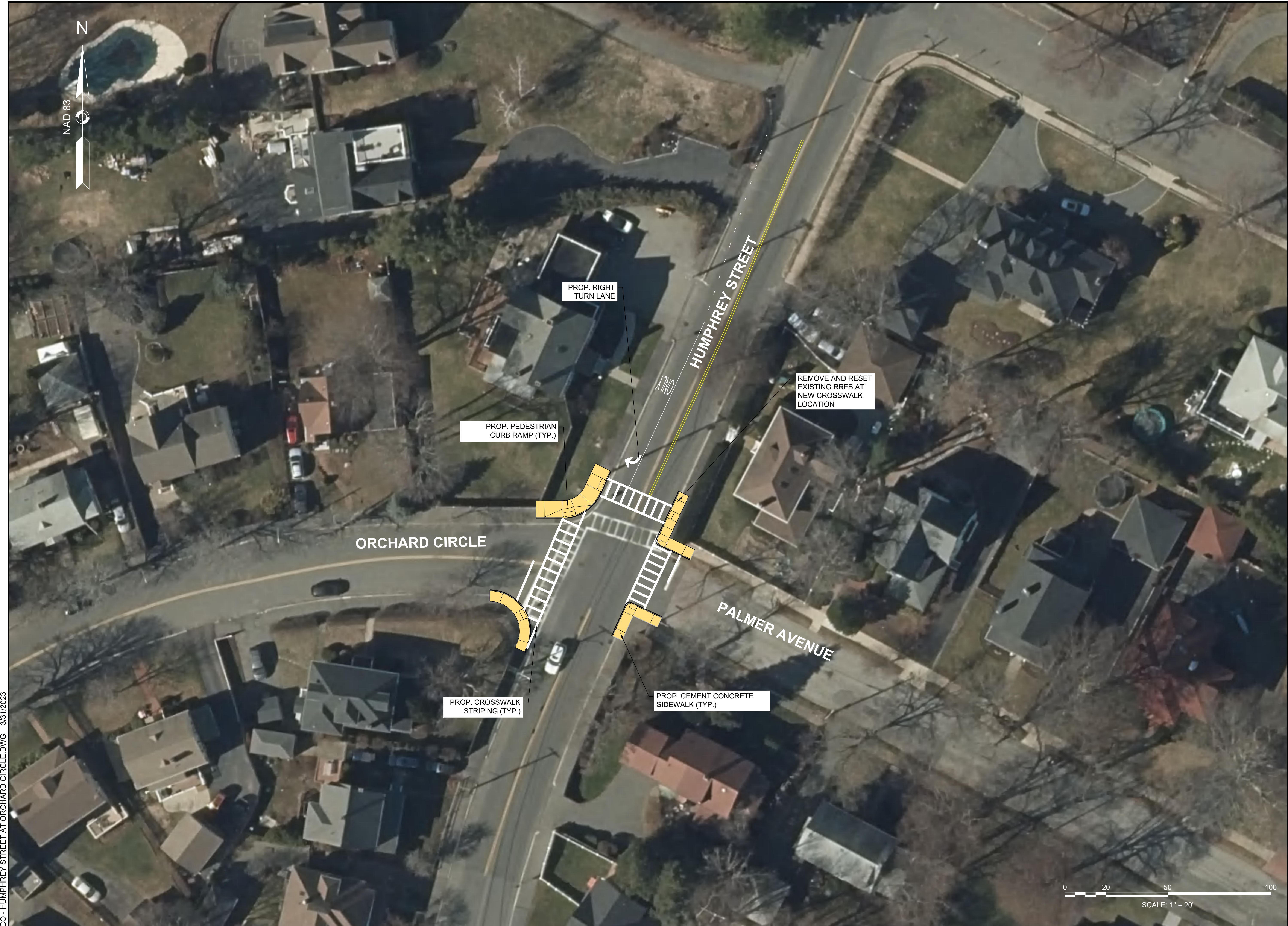
DRAWN/DESIGN BY
 CGZ

CHECKED BY
 ZEW

**LOCATION 3
 HUMPHREY STREET
 AT
 ORCHARD CIRCLE**

SCALE: 1"=20'

2021185.04





**OFFSITE ROADWAY IMPROVEMENTS AT
VARIOUS LOCATIONS
SWAMPSCOTT, MASSACHUSETTS**

--

REVISIONS		
NO.	REVISION	DATE

DRAWN/DESIGN BY: CGZ CHECKED BY: ZEW

**LOCATION 4
FOREST AVENUE EXT.
AT HUMPHREY STREET**

SCALE: 1"=20'
2021185.04
6 OF 6

CO - HUMPHREY STREET AT ATLANTIC AVENUE DWG 3/31/2023