



Addendum

Addendum Number: 1
Addendum Date: 8/23/21
Written To: Max Kasper
Project Name: Swampscott Middle School Hydronics Upgrades
CES Project Number: 2021333.00
Written By: David Hillburn, PE

The work shall be carried out in accordance with the following supplemental instructions and in accordance with the Contract Documents.

Description:

MEP-0: ADD ET-2 to expansion tank schedule

MEP-1: ADD ET-2 to new work floor plan. ADD existing boiler panel as power for new circuit on floor plan and keynote 1.

MEP-5: ADD ET-2 and piping to hot water diagram.

Attachments: MEP-0

MEP-1

MEP-5

END OF ADDENDUM #1

MAS/mas/Addendum.doc

Cc:



811 Middle Street
Middletown, CT 06457
Tel. (860) 632-1682
Fax. (860) 632-1768
CES *0000.00

**TOWN OF SWAMPSCOTT-
SWAMPSCOTT PUBLIC
SCHOOLS**

REVISIONS

| NO. | DATE | DESCRIPTION |
|-----|---------|-------------|
| 1 | 8/23/21 | ADDENDUM #1 |

**SWAMPSCOTT
MIDDLE SCHOOL
HOT WATER
HEATING SYSTEM
UPGRADE**

24 REDINGTON STREET
SWAMPSCOTT, MA 01907

**MECHANICAL
SCHEDULES,
NOTES, AND
SYMBOLS**

DATE: 8/11/21
PROJECT NO: 2021333.00
DRAWN: DJH
CHECKED: EJR
ISSUED FOR: BIDDING
REVISIONS: Current Revision

SHEET NO.

MEP-0

| HVAC DEMOLITION LEGEND | |
|------------------------|------------------------------------|
| SYMBOL | DESCRIPTION |
| | REMOVE EXISTING DUCTWORK/EQUIPMENT |
| | REMOVE EXISTING PIPING/EQUIPMENT |
| ETR | EXISTING TO REMAIN |
| RE | REMOVE EXISTING |
| RL | RELOCATE EXISTING |
| NL | NEW LOCATION |

| PIPING LEGEND | |
|---------------|-------------------------------|
| SYMBOL | DESCRIPTION |
| | HOT WATER SUPPLY |
| | HOT WATER RETURN |
| | GATE VALVE |
| | BALL VALVE |
| | GLOBE VALVE |
| | BUTTERFLY VALVE |
| | CHECK VALVE |
| | UNION |
| | STRAINER WITH VALVED BLOWDOWN |
| | PIPE ANCHOR |
| | PIPE DROP |
| | PIPE RISE |

| TEMPERATURE CONTROL LEGEND | |
|----------------------------|-----------------------------------|
| SYMBOLS | DESCRIPTION |
| | ANALOG INPUT |
| | ANALOG OUTPUT |
| | DIGITAL INPUT |
| | DIGITAL OUTPUT |
| | AQUASTAT |
| | TEMPERATURE SENSOR |
| | THERMOSTAT |
| | RELATIVE HUMIDITY SENSOR |
| | CARBON DIOXIDE SENSOR |
| | FLOW METER |
| | AIR FLOW MEASURING STATION |
| | CURRENT SENSING RELAY |
| | ENDSWITCH |
| | VARIABLE FREQUENCY DRIVE |
| | VFD BYPASS |
| | DIFFERENTIAL PRESSURE |
| | DIFFERENTIAL PRESSURE TRANSMITTER |
| | STATIC PRESSURE SENSOR |
| | AIR FLOW SWITCH |

| GLYCOL MAKE-UP UNIT SCHEDULE | | | | | | | | |
|------------------------------|-------------------------------|------------------|-------------|----------------------------------|---|----------------------------|----------------|---------|
| SYMBOL | MANUFACTURER/ MODEL NUMBER | SYSTEM SERVED | LOCATION | APPROXIMATE TANK VOLUME (GAL) | MAXIMUM DISCHARGE PRESSURE (PSIG) | DIMENSIONS DIA.X.H (IN) | ELECTRICAL | REMARKS |
| GMU-1 | SKIDMORE S-100-100-2-PEFS | HW | BOILER ROOM | 100 | 100 | 39Ø x 49.75 | 120V/1PH/ 60HZ | 1-6 |

REMARKS:

- SINGLE POINT POWER CONNECTION.
- TIMED MIXING LOOP.
- HIGH AND LOW LEVEL ALARMS.
- MANUAL ON/OFF PUMP OPERATION
- UL CONTROL PANEL.
- PRESSURE RELIEF VALVES.

| EXPANSION TANK SCHEDULE | | | | | | | | |
|-------------------------|-------------------------------|------|-----------|---------------|----------------------|------------------------------------|-------------------|---------|
| SYMBOL | MANUFACTURER/ MODEL NUMBER | TYPE | LOCATION | CONFIGURATION | TANK VOLUME (GAL) | MIN. ACCEPTANCE VOLUME (GAL) | SIZE (DIA X H) | REMARKS |
| ET-1 & ET-2 | TACO CA300-125 | B | MECH ROOM | VERTICAL | 79 | 79 | 24x58 | 1-3 |

TYPES:
B = BLADDER EXPANSION TANK
D = DIAPHRAGM EXPANSION TANK
BT = BUFFER TANK

CONFIGURATION:
H = HORIZONTAL
V = VERTICAL (FLOOR MOUNTED)

REMARKS:

- PROVIDE ALL REQUIRED TANK FITTINGS AND VALVES.
- MAXIMUM TANK PRESSURE: 100 PSI
- MINIMUM TANK PRESSURE: 15 PSI

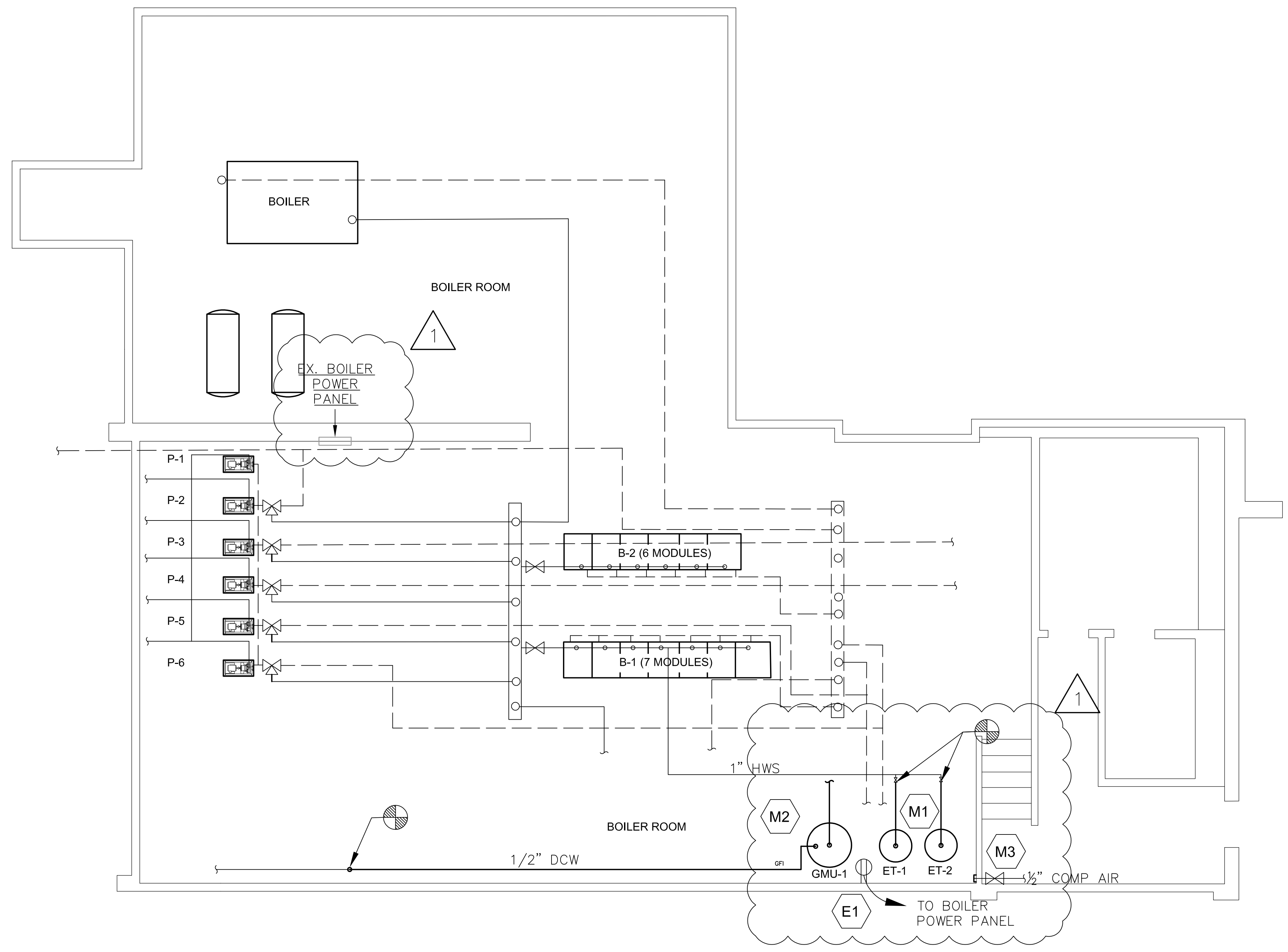
**MECHANICAL, ELECTRICAL, AND PLUMBING
NEW WORK KEY NOTES**

M1 PROVIDE NEW EXPANSION TANKS AND CONNECT TO EXISTING HOT WATER HEATING SYSTEM PER DETAIL 1 SHT MEP-5.

M2 PROVIDE NEW GLYCOL MAKE-UP UNIT AND CONNECT TO EXISTING HOT WATER SYSTEM PER DETAIL 2 SHT MEP-5.

M3 VALVE AND CAP EXISTING COMPRESSED AIR LINE.

E1 PROVIDE 120V, 20A, GFCI OUTLET MOUNTED 18" AFF FOR PLUG IN CONNECTION TO GLYCOL MAKEUP UNIT. LOCATE OUTLET WITHIN 6FT FROM UNIT. USE 2#12, #125, 3/4" C FROM NEW 15A/1P CIRCUIT BREAKER TO EXISTING GE A-SERIES AF31S BOILER POWER PANEL.



1 BASEMENT MEP NEW WORK PLAN
SCALE: 1/4" = 1'-0"

CES
Consulting Engineering Services, Inc.

811 Middle Street
Middletown, CT 06457
Tel. (860) 632-1682
Fax. (860) 632-1768
CES *0000.00

**TOWN OF SWAMPSCOTT-
SWAMPSCOTT PUBLIC
SCHOOLS**

| REVISIONS | | |
|-----------|---------|-------------|
| NO. | DATE | DESCRIPTION |
| 1 | 8/23/21 | ADDENDUM #1 |

**SWAMPSCOTT
MIDDLE SCHOOL
HOT WATER
HEATING SYSTEM
UPGRADE**

24 REDINGTON STREET
SWAMPSCOTT, MA 01907

**MECHANICAL
PIPING
BASEMENT**

DATE: 8/11/21
PROJECT NO: 2021333.00
DRAWN: DJH
CHECKED: EJR
ISSUED FOR: BIDDING
REVISIONS: Current Revision

SHEET NO.
MEP-1

**TOWN OF SWAMPSCOTT-
SWAMPSCOTT PUBLIC
SCHOOLS**

| REVISIONS | | |
|-----------|---------|-------------|
| NO. | DATE | DESCRIPTION |
| 1 | 8/23/21 | ADDENDUM #1 |

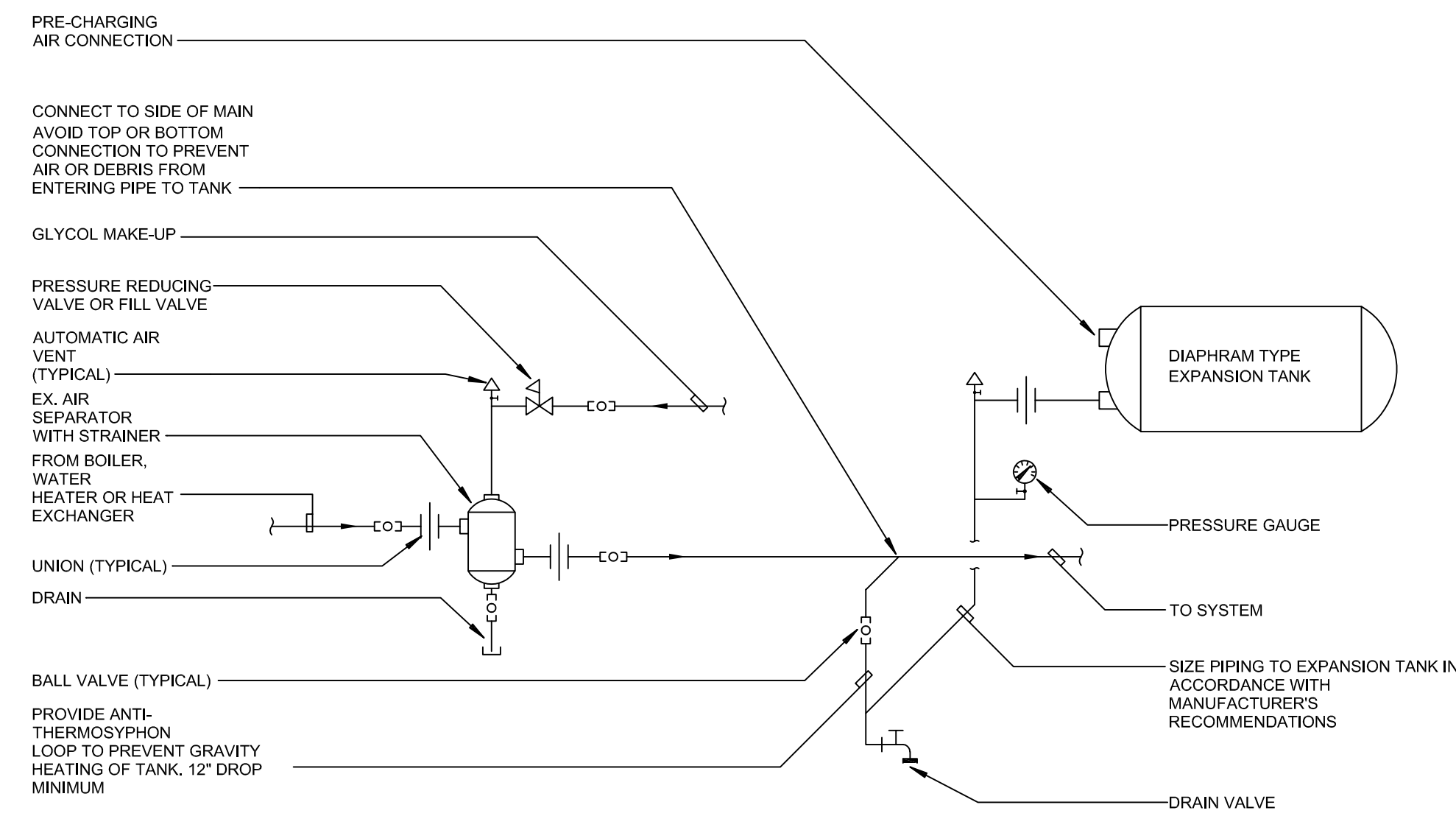
**SWAMPSCOTT
MIDDLE SCHOOL
HOT WATER
HEATING SYSTEM
UPGRADE**
24 REDINGTON STREET
SWAMPSCOTT, MA 01907

**MECHANICAL
DETAILS AND
DIAGRAM**

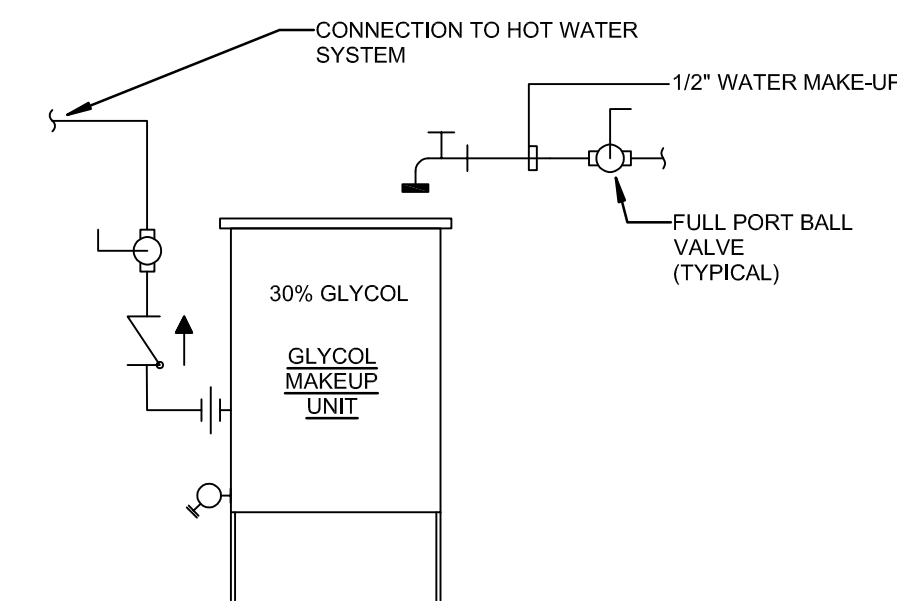
DATE: 8/11/21
PROJECT NO: 2021333.00
DRAWN: DJH
CHECKED: EJR
ISSUED FOR: BIDDING
REVISIONS: Current Revision

SHEET NO.

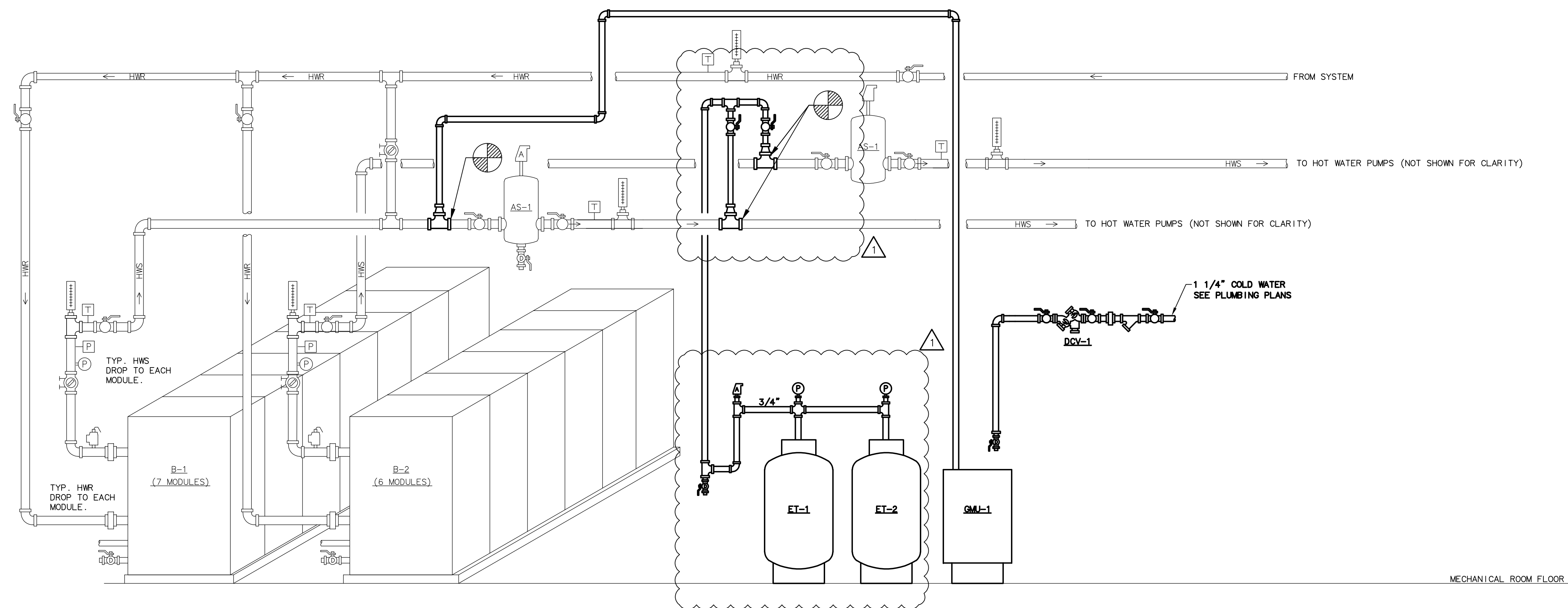
MEP-5



1 EXPANSION TANK PIPING DETAIL
N.T.S.



2 GLYCOL MAKEUP UNIT PIPING DETAIL
N.T.S.



3 HOT WATER BOILER DIAGRAM - NEW WORK
N.T.S.