

# SWAMPSCOTT HIGH SCHOOL SPRINKLER BRANCHLINE REPLACEMENT

200 Essex St. Swampscott, MA 01907



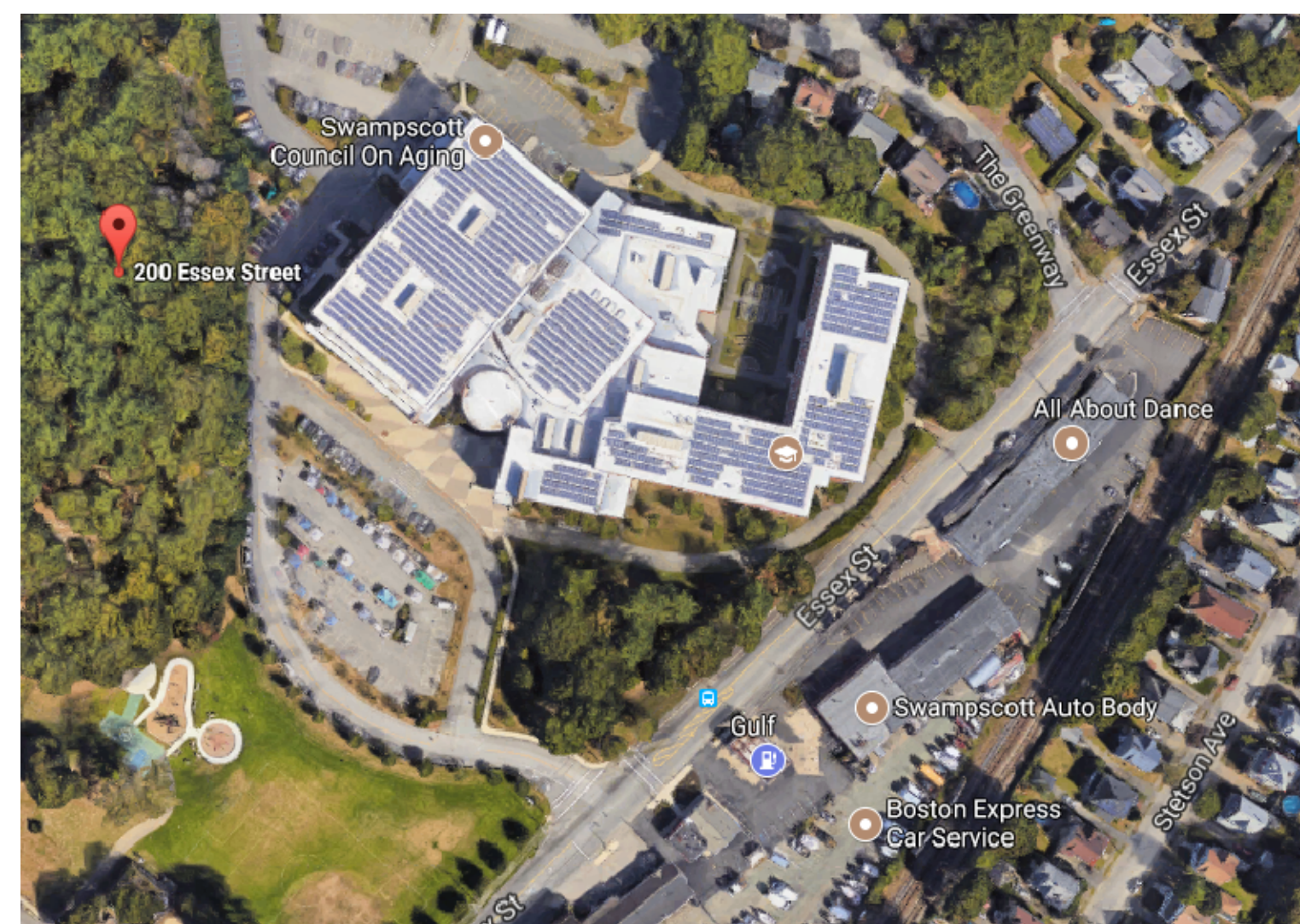
This CADD Document is an instrument of professional service, and shall not be used, in whole or in part, for any project other than for which it was created without the expressed, written consent of the RDK Engineers. Any unauthorized use, reuse, modification or alteration, including automated conversion of this document shall be at the user's sole risk without liability or legal exposure to the RDK Engineers.

**REVISIONS**

▲ DATE	CHK	DESCRIPTION

**SEAL**

LOCUS PLAN



DRAWING LIST

Sheet Number	Sheet Title
COVER SHEET C0.00	COVER SHEET
FIRE PROTECTION FP0.00 FPD2.00 FP2.00	FIRE PROTECTION LEGEND NOTES AND ABBREVIATIONS FIRE PROTECTION DEMOLITION GYMNASIUM PLAN FIRE PROTECTION NEW WORK GYMNASIUM PLAN

**PROJECT**

NUMBER  
20170333  
DATE  
4/04/2018  
SWAMPSCOTT  
HIGH SCHOOL  
SPRINKLER BRANCHLINE  
REPLACEMENT

**DRAWING**

DRAWN BY  
CSL  
CHECKED BY  
JF  
SCALE  
NO SCALE  
COVER SHEET



**BID DOCUMENTS**  
04-04-18

**C0.00**

D:\2017\20170333 - Swampscott High School Gym Sprinkler\2017 Drawings\2017 Fire Protection\Plot Files\20170333\_C0.00\_C000.rvt: SHEET.rvt [Sheet] March 30, 2018 10:57am csls



This CADD Document is an instrument of professional service, and shall not be used, in whole or in part, for any project other than for which it was created without the expressed, written consent of the RDK Engineers. Any unauthorized use, reuse, modification or alteration, including automated conversion of this document shall be at the user's sole risk without liability or legal exposure to the RDK Engineers.

**REVISIONS**

▲ DATE	CHK	DESCRIPTION

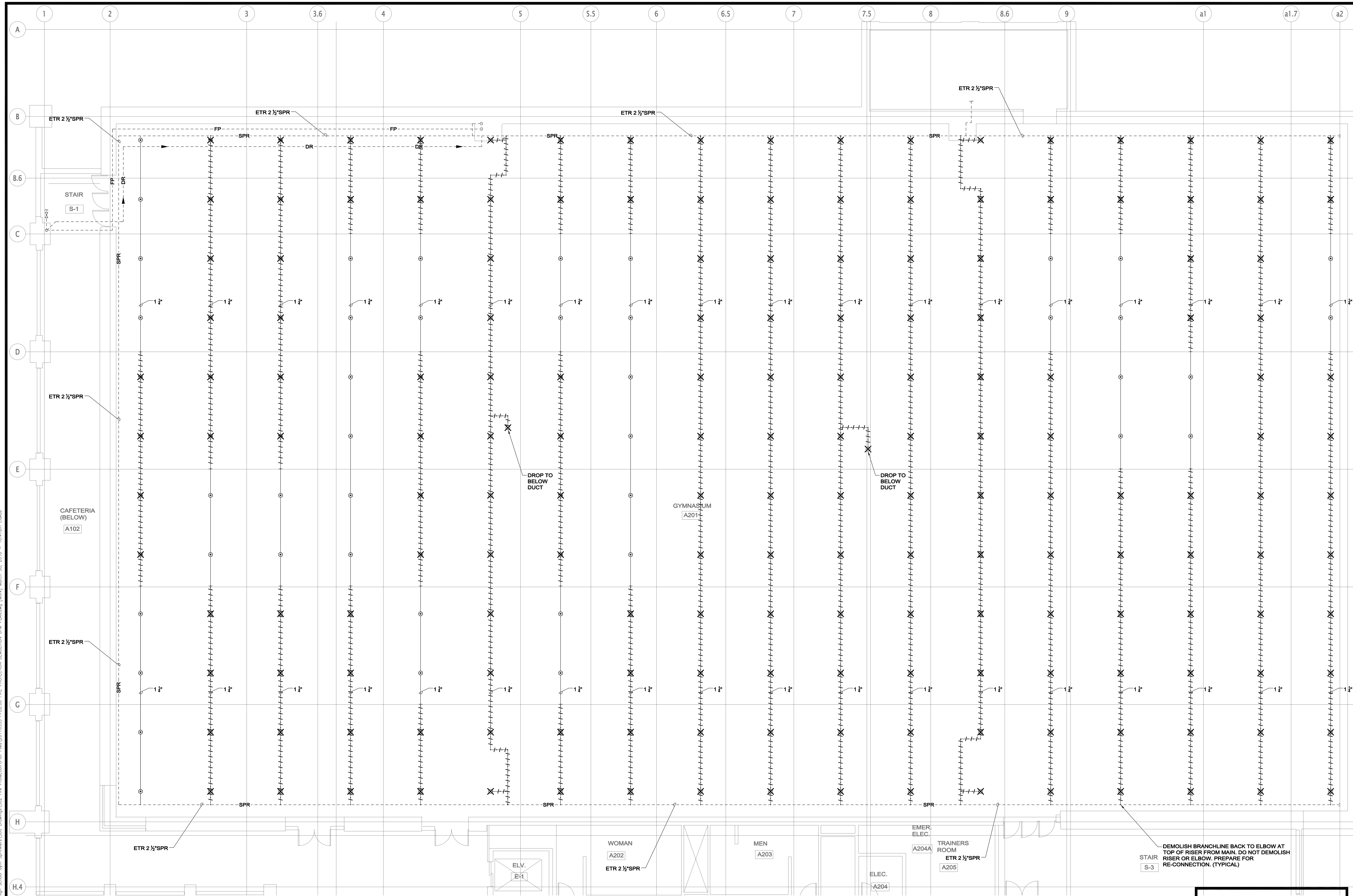
**SEAL**

**PROJECT**

NUMBER  
20170333  
DATE  
4/04/2018  
SWAMPSCOTT  
HIGH SCHOOL  
SPRINKLER BRANCHLINE  
REPLACEMENT

**DRAWING**

DRAWN BY  
CSL  
CHECKED BY  
JF  
SCALE  
1/8" = 1'-0"  
FIRE PROTECTION  
DEMOLITION  
GYMANASIUM PLAN

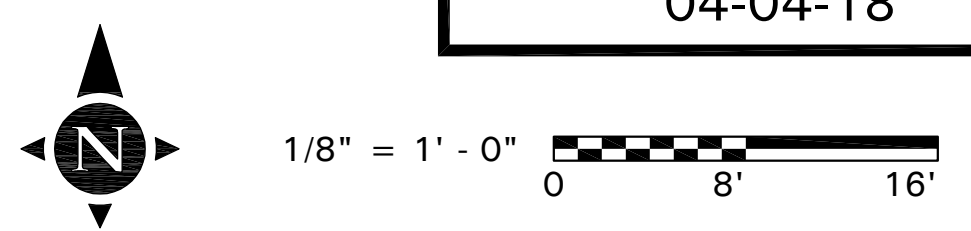


**NOTES:**

1. PROVIDE SPRINKLER SYSTEM SHUTDOWN, DRAINING, AND RE-FILL TO FACILITATE THE SPRINKLER SYSTEM WORK AS PART OF THESE CONSTRUCTION DOCUMENTS. PROVIDE MULTIPLE SYSTEM SHUTDOWNS, DRAININGS, AND RE-FILLS AS REQUIRED TO FACILITATE THE WORK. COORDINATE ALL SHUTDOWNS WITH THE OWNER & FIRE DEPARTMENT AND DOCUMENT IN THE IMPAIRMENT PLAN & PERMITS.
2. AN EXTENDED GYMNASIUM SPRINKLER SYSTEM SHUTDOWN IS ALLOWED PER APPROVAL BY THE SWAMPSCOTT FIRE DEPARTMENT. DO NOT SHUTDOWN SPRINKLER ZONES OUTSIDE OF THE GYMNASIUM.
3. THE GYMNASIUM IS EQUIPPED WITH BEAM SMOKE DETECTORS. TAKE CAUTION WHEN WORKING IN THE GYMNASIUM. IMPAIRMENTS OF BEAM SMOKE DETECTORS ARE ALLOWED ON A DAILY BASIS WITH PRIOR APPROVAL OF THE FIRE DEPARTMENT. COORDINATE AND DOCUMENT IN THE IMPAIRMENT PLAN. REFER TO DEMOLITION NOTES ON DRAWING FP0.00.

**NOTE:**  
APPROXIMATE ROOF  
ELEVATION IS 36'

**BID DOCUMENTS**  
04-04-18



**FPD2.00**

C:\2017\20170333 - Swampscott High School Gym Sprinkler\002 Drawing\002 Fire Protection\Plan\Plan\20170333 FPD2.00 FIRE PROTECTION DEMOLITION.dwg [User: jf] March 30, 2018 - 10:47:01 a.m.

This CADD Document is an instrument of professional service, and shall not be used, in whole or in part, for any project other than for which it was created without the expressed, written consent of the RDK Engineers. Any unauthorized use, reuse, modification or alteration, including automated conversion of this document shall be at the user's sole risk without liability or legal exposure to the RDK Engineers.

**REVISIONS**

DATE	CHK	DESCRIPTION

**SEAL**

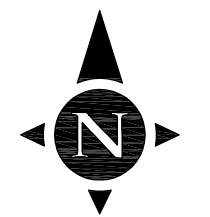
**PROJECT**

NUMBER  
20170333  
DATE  
4/04/2018  
SWAMPSCOTT  
HIGH SCHOOL  
SPRINKLER BRANCHLINE  
REPLACEMENT

**DRAWING**

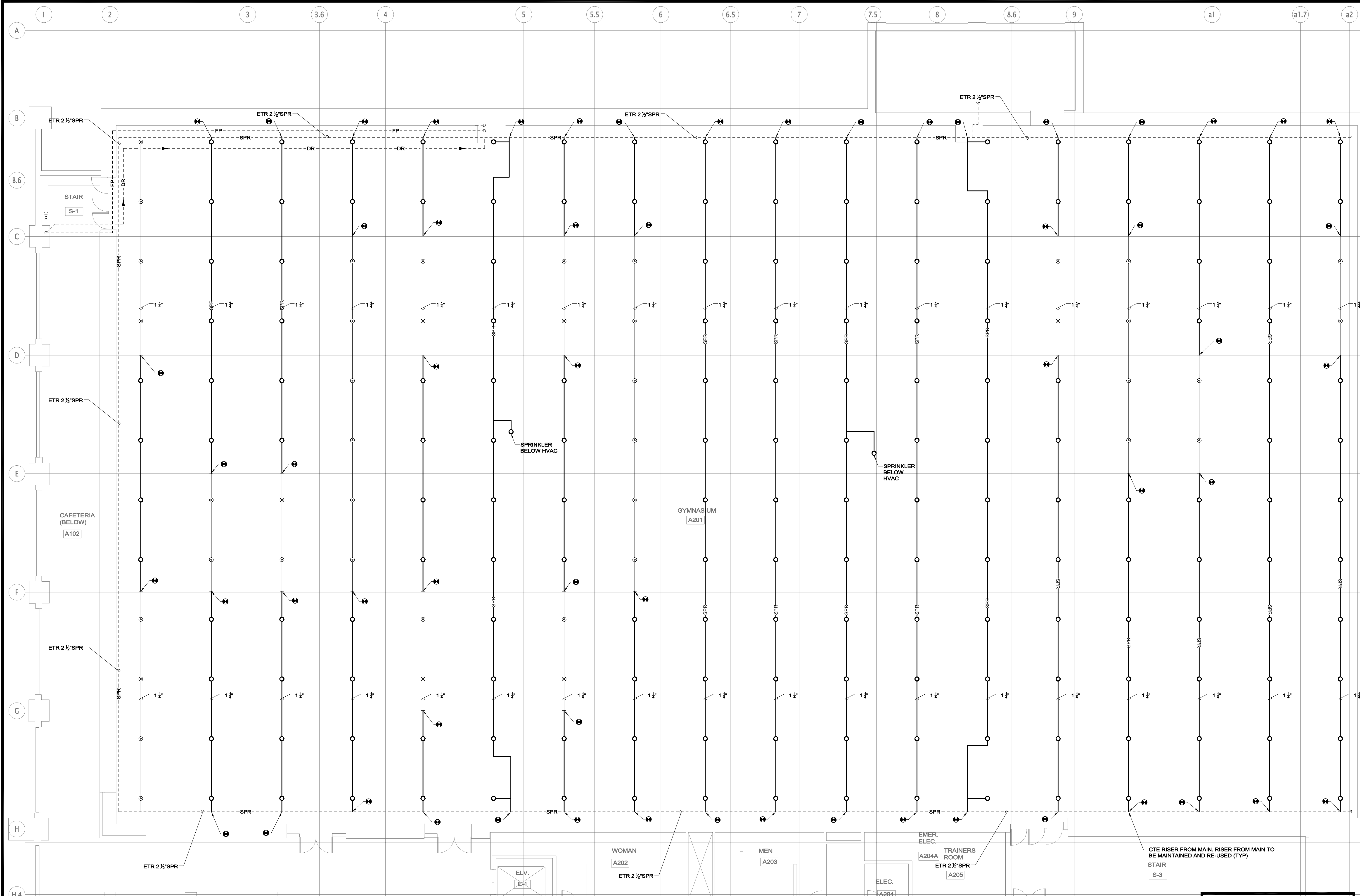
DRAWN BY  
CSL  
CHECKED BY  
JF  
SCALE  
1/8" = 1'-0"  
FIRE PROTECTION  
NEW WORK  
GYMANASIMUM PLAN

**BID DOCUMENTS**  
04-04-18



1/8" = 1'-0"  
0 8' 16'

**FP2.00**



- NOTES:**
1. PROVIDE SPRINKLER SYSTEM SHUTDOWN, DRAINING, AND RE-FILL TO FACILITATE THE SPRINKLER SYSTEM WORK AS PART OF THESE CONSTRUCTION DOCUMENTS. PROVIDE MULTIPLE SYSTEM SHUTDOWNS, DRAININGS, AND RE-FILLS AS REQUIRED TO FACILITATE THE WORK. COORDINATE ALL SHUTDOWNS WITH THE OWNER & FIRE DEPARTMENT AND DOCUMENT IN THE IMPAIRMENT PLAN & PERMITS.
  2. AN EXTENDED GYMNASIUM SPRINKLER SYSTEM SHUTDOWN IS ALLOWED PER APPROVAL BY THE SWAMPSCOTT FIRE DEPARTMENT. DO NOT SHUTDOWN SPRINKLER ZONES OUTSIDE OF THE GYMNASIUM.
  3. THE GYMNASIUM IS EQUIPPED WITH BEAM SMOKE DETECTORS. TAKE CAUTION WHEN WORKING IN THE GYMNASIUM. IMPAIRMENTS OF BEAM SMOKE DETECTORS ARE ALLOWED ON A DAILY BASIS WITH PRIOR APPROVAL OF THE FIRE DEPARTMENT. COORDINATE AND DOCUMENT IN THE IMPAIRMENT PLAN. REFER TO DEMOLITION NOTES ON DRAWING FP0.00.

**NOTE:**  
APPROXIMATE ROOF  
ELEVATION IS 36'

D:\2017\20170333 - Swampscott High School Gym Sprinkler\04 Drawing\02 Fire Protection\Plan Fire Protection\Plan Fire Protection.dwg (Rev.) 04/04/2018 - 10:27am dsl