



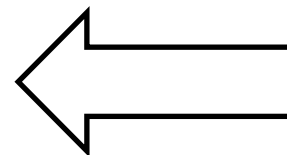
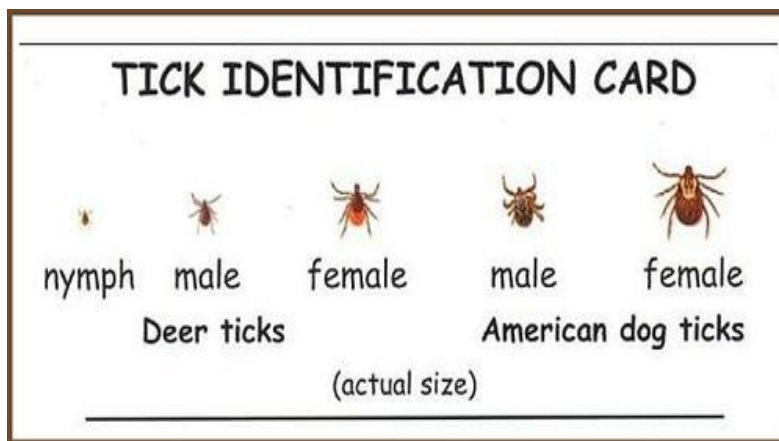
CAUTION!

Tick Habitat

Ticks, such as the Blacklegged tick/Deer tick and American dog tick, are active all year long and can carry the pathogens that cause Lyme Disease, Babesiosis and Anaplasmosis.

Tick Tips

- Stay on the trail
- Wear shoes, not sandals
- Wear repellent such as DEET on exposed skin & Permethrin on clothing and footwear
- After being outside, check yourself, children and pets for ticks. Place clothes in the dryer for 20 minutes
- If you find a tick on you, remove it by placing tweezers close to skin and pulling upward. Do NOT twist or jerk tick.



Approximate sizes

*MA Department of Public Health

North Shore Shared Public Health Services Program

For more information contact your local health department

